

# CK

# technik A/S

## SK45 DISTRIBUTION UNITS

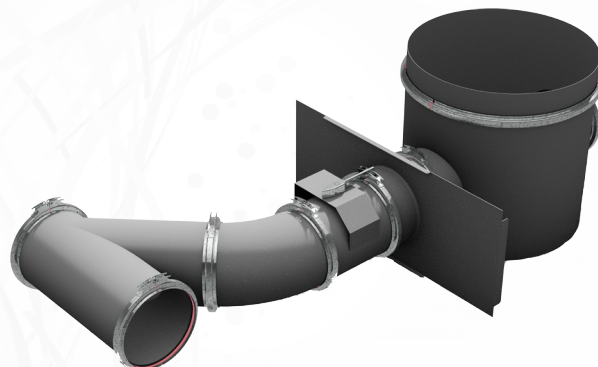
### DESIGN

Distribution units with outlets in large diameters  
(standard: Ø110, Ø150, Ø160, Ø200)

Available with different solutions (manual or automatic) for opening and management of material quantities.

Galvanized or stainless steel.

Snap couplings for easy silo choice on manual systems



### The customer at the center of attention

The Distributionboxes are designed according to customer specifications, and is adaptable to most silos.

At CK Teknik we draw and possibly animate all products in 3D, which will cause unforeseen mechanical problems already to be identified and corrected

### Options

Sizes according to silo specifications

Pneumatic or manual valves

Manual valves for regulating material volume

